



Tradewind VA



Flight Briefing Package

TCC907B KDEN-KMEM

20-Jul-2019 #1

RELEASE #1

DENVER INTL
(UNITED STATES)

-

MEMPHIS INTL
(UNITED STATES)

PREPARED BY CHRISTIAN BREUER (TCA2984)

CHRISTIAN@TCA-CHARTER.DE

20 JUL 1015 UTC

Fuel Planning (kg)	EU-OPS	Fuel	Time
TRIP		10.115	01:41
CONT 5%		506	00:06
HOLD	KMEM	1.714	00:20
ALTN	KBNA	4.086	00:37
FINAL RESV		2.567	00:30
ADD FUEL		457	00:05
MIN T/O		19.445	03:19
EXTRA		1.285	00:15
TAXI		884	00:17
RELEASE	KDEN	21.614	03:51
ARR FUEL	KMEM	9.679	01:35

Load Planning (kg)	PJTGD	Plan	Limit
Empty Weight		156.146	
Zero Fuel Weight	Limit	156.146	209.106
Fuel		21.614	162.613
Ramp Weight		177.760	348.359
Take-Off Weight KDEN		176.876	284.061
Landing Weight KMEM		166.761	223.167
Underload		52.960	Lim ZFW
Max Extra Fuel		56.406	Lim LDW

Cost Planning		
Flight Time	01:41\$	9.991
Fuel	11.935\$	6.784
Total		\$ 16.775

TRADEWIND CARIBBEAN FLIGHTPLAN - IFR TCC907B PJTGD KDEN-KMEM

 ALL WEIGHTS IN KILOGRAMS (KG) STD 20JUL/1300Z

OFFP 1 - PREPARED 20JUL/1015Z BY CHRISTIAN BREUER (TCA2984) CHRISTIAN@TCA-CHARTER.DE

TR907B/TCC907B PJTGD/B777-2LR GE SEL/EFAD ROUTE: KDENKMEM05

DEP: KDEN/DEN 34L ELEV 5434 FT COST INDEX: 250 TTL G/C DIST: 758 NM
 ARR: KMEM/MEM 18R ELEV 341 FT INIT ALT: FL390 TTL F/P DIST: 767 NM
 FUEL BIAS: 100.5% TTL AIR DIST: 756 NM
 AVG WIND CMP: TL006 KT

ALT: KBNA/BNA 20R ELEV 599 FT 189 NM

CONFIG	DOW	PAX	CARGO	TOTAL	ULOAD LIM	ZFW	TOW	LDW
STANDARD	156146	0	0	0	52960 ZFW	MAX 209106	284061	223167
						PLN 156146	176876	166761
						ACT

 ** TAKE-OFF DATA KDEN 34L **

COND: 176876 KG // RWY DRY // +24°C Q1014 250/08 // LMT: STRUCT
 CONFIG: FLAPS 5 // D-T02 +51C // A/I OFF/AUTO // A/C ON
 SPEEDS: V1=116 VR=133 V2=133
 ENG OUT: LT TO 'SHAFT' [12 DME R 306 'FQF' 116.3] (306 INBD,RT)

	FUEL	CORR	ENDUR	
TRIP	10115	01:41	
CONT 5%	506	00:06	
ALTN KBNA	4086	00:37	
FINAL RESV	2567	00:30	
HOLD	1714	00:20	
ADD FUEL	457	00:05	
MIN T/O	19445	03:19
EXTRA	1285	00:15	CAPTAINS SIGNATURE (....)
TAXI	884	00:17	
RELEASE	21614	03:51	I ACCEPT THIS OFFP AND I AM FAMILIAR
ARR FUEL	9679	01:35	WITH THE PLANNED ROUTE AND AERODROMES

FUEL TANK CAP 162613 KG / MAX EXTRA FUEL 57691 KG LIM BY LDW
 TRIP CORR FOR 3000 KG TOW INCR: +74 KG / 3000 KG TOW DECR: -70 KG
 2000 FT LOWER: +218 KG / EET 01:41 CLB: 250/310/84 DES: 84/320/250

 KDEN STD 13:00Z/07:00L ETD 13:00Z ACT OFBL EST T/O 13:17Z ACT T/O
 KMEM STA 15:35Z/10:35L ETA 15:16Z ACT ONBL EST LDG 14:58Z ACT LDG
 SKD 02:35 PLN 02:16 TTL BLCK EST FLT 01:41 TTL FLT

ATC ROUTE: N0491F390 EPKEE5 GATTR DCT ICT DCT RZC BRBBQ3

ALTERNATE PLANNING

ALTN/RWY	DIST	ALT/FL	MSA	COMP	TIME	FUEL	DIFF	ROUTE
KBNA/20R	189	FL306	040	0	00:37	4086	-	GOETZ6 GOETZ DCT WITOS

MOST CRITICAL MORA 12100 FT AT KDEN

AWY	WAYPOINT	MT	ALT	MSA	FREQ	TAS	LEG	FUEL	REM / USED	LEG	ACC
-FIR	NAME			ISA	WND/SPD	GS	REM	POSITION		ETO / ATO	

```

-----
      KDEN/34L      5434 121                20.7 /  0.9
      DENVER INTL                767 N3951.1 W10441.8 ...../.....

EPKEE5  KIDNG      092  *CLB 121                18    19.3 /  2.3  04  00.04
      P14 217/022                749 N3948.6 W10423.7 ...../.....

EPKEE5  PIDLE      107  *CLB 121                12    18.8 /  2.8  02  00.06
      P13 232/018                737 N3943.6 W10409.1 ...../.....

EPKEE5  APUUU      107  *CLB 121                10    18.5 /  3.1  01  00.07
      P11 242/018                727 N3939.3 W10357.2 ...../.....

EPKEE5  VCTRE      110  *CLB 091                3     18.4 /  3.2  00  00.07
      P11 245/017                724 N3937.9 W10353.7 ...../.....

EPKEE5  EPKEE      111  *CLB 091                5     18.3 /  3.3  01  00.08
      P10 252/017                719 N3935.6 W10348.0 ...../.....

EPKEE5  *TOC       101  FL390 091                491  27    17.7 /  4.0  03  00.11
      P02 267/020 510 692 N3926.9 W10314.9 ...../.....

EPKEE5  CLAMR      102  FL390 091                491  45    17.2 /  4.4  05  00.16
      P03 273/015 508 647 N3912.1 W10220.2 ...../.....

EPKEE5  WEEDS      103  FL390 065                492  16    17.0 /  4.6  02  00.18
      P03 274/013 506 631 N3906.7 W10200.8 ...../.....

EPKEE5  GATTR      104  FL390 065                492  28    16.7 /  4.9  03  00.21
      P02 269/011 503 603 N3857.0 W10126.9 ...../.....

      KICT          104  FL390 054                18    16.5 /  5.1  03  00.24
      P03 261/009                585 N3850.6 W10105.0 ...../.....

DCT      *BDRY      105  FL390 054                492  35    16.1 /  5.5  04  00.28
-KZKC   P02 240/017 502 550 N3838.1 W10023.0 ...../.....

DCT      ICT        106  FL390 047 113.80 492 143    14.5 /  7.1  17  00.45
WICHITA P02 229/025 503 407 N3744.7 W09735.0 ...../.....

DCT      *BDRY      114  FL390 042                492 163    12.7 /  8.9  20  01.05
-KZME   P03 219/016 495 243 N3627.3 W09434.8 ...../.....

DCT      RZC         118  FL390 035 116.40 493 26    12.4 /  9.2  03  01.08
RAZORBACK FAYETTEVIL P03 216/015 495 218 N3614.8 W09407.3 ...../.....

      KMEM          100  FL390 038                18    12.3 /  9.4  02  01.10
      P03 204/015                200 N3611.2 W09345.9 ...../.....

BRBBQ3  MARBI      101  FL390 038                493  17    12.1 /  9.5  02  01.12
      P03 212/014 498 184 N3607.7 W09326.0 ...../.....

BRBBQ3  *TOD        101  FL390 038                493  66    11.3 / 10.3  08  01.20
      P03 199/011 494 117 N3553.2 W09206.0 ...../.....

BRBBQ3  IGL00      103  *DES 037                18    11.3 / 10.3  02  01.22
      P13 227/003                99  N3549.1 W09144.2 ...../.....

BRBBQ3  SAUCC      115  *DES 032                25    11.2 / 10.4  03  01.25
      P16 175/006                75  N3539.0 W09116.8 ...../.....

BRBBQ3  BRBBQ      115  *DES 032                21    11.2 / 10.4  03  01.28
      P15 148/005                53  N3530.1 W09053.2 ...../.....

```

BRBBQ3	JAMLA	113	*DES 032	13	11.1 / 10.5	02	01.30
			P15 164/005	40	N3525.2 W09038.5/.....	
BRBBQ3	KMEM/18R	126	341 032	40	10.6 / 11.0	11	01.41
	MEMPHIS INTL				N3503.0 W08959.3/.....	

WIND INFORMATION - OBS 20/JUL 06:00

(CLIMB) ICT (DESCENT)
FL330 262/020 -41 FL430 227/021 -62 FL330 170/001 -38
FL260 236/018 -24 FL410 228/023 -58 FL260 173/004 -22
FL200 219/020 -11 FL390 229/025 -54 FL200 153/007 -9
13000 259/009 +7 FL370 233/024 -50 13000 158/007 +4
6000 339/013 +21 FL350 239/023 -45 6000 234/008 +17

END FLIGHTPLAN 03265 TCC907B PJTGD KDEN-KMEM 20JUL2019

[ATC FLIGHTPLAN]

(FPL-TCC907B-IS
-B77L/H-SDE1FGHIJ1J5M1RWXY/LB2
-KDEN1300
-N0491F390 EPKEE5 GATTR DCT ICT DCT RZC BRBBQ3
-KMEM0141 KBNA
-PBN/A1B1C1D1L101S2 NAV/RNVD1E2A1 DOF/190720 REG/PJTGD
EET/KZKC0028 KZME0105
SEL/EFAD CODE/484DC6 RVR/75 OPR/TRADEWIND CARIBBEAN
ORGN/TNCCTCAP PER/D
RMK/TCAS
-E/0334)

[PLANNING WEATHER]

ORIGIN: KDEN/DEN (DENVER INTL, UNITED STATES)

UTC -06:00

KDEN 200953Z 28008KT 10SM BKN160 24/08 A2995 RMK A02 SLP035 T02390083
KDEN 200907Z 2009/2112 25008KT P6SM FEW150 SCT220
FM201600 01012KT P6SM SCT120 BKN180
FM201800 02014G22KT P6SM FEW080 SCT110 BKN150
FM202000 04012KT P6SM SCT080 BKN110
TEMPO 2022/2102 VRB20G30KT 5SM TSRA BKN060CB
FM210200 08010KT P6SM SCT080 BKN120
PROB30 2102/2104 -TSRA BKN070CB
FM210400 16010KT P6SM VCSH SCT080 BKN120
FM210700 19010KT P6SM SCT080 BKN120

DESTINATION: KMEM/MEM (MEMPHIS INTL, UNITED STATES)

UTC -05:00

KMEM 200954Z 18006KT 10SM FEW045 FEW250 26/24 A3000 RMK A02 SLP154
T02560244 \$
KMEM 200852Z 2009/2112 19005KT P6SM BKN250
FM201400 24006KT P6SM SCT025 BKN250
FM201800 23007KT P6SM OVC250
FM210900 20005KT P6SM OVC050

ALTERNATE: KBNA/BNA (NASHVILLE INTL, UNITED STATES)

UTC -05:00

KBNA 200953Z 00000KT 10SM CLR 26/22 A3004 RMK A02 SLP162 T02560222
KBNA 200520Z 2006/2106 19004KT P6SM SKC
FM201600 19006KT P6SM SCT050
PROB30 2019/2024 4SM TSRA OVC050CB

ADEQUATE: KICT/ICT (WICHITA EISENHOWER NATL, UNITED STATES)

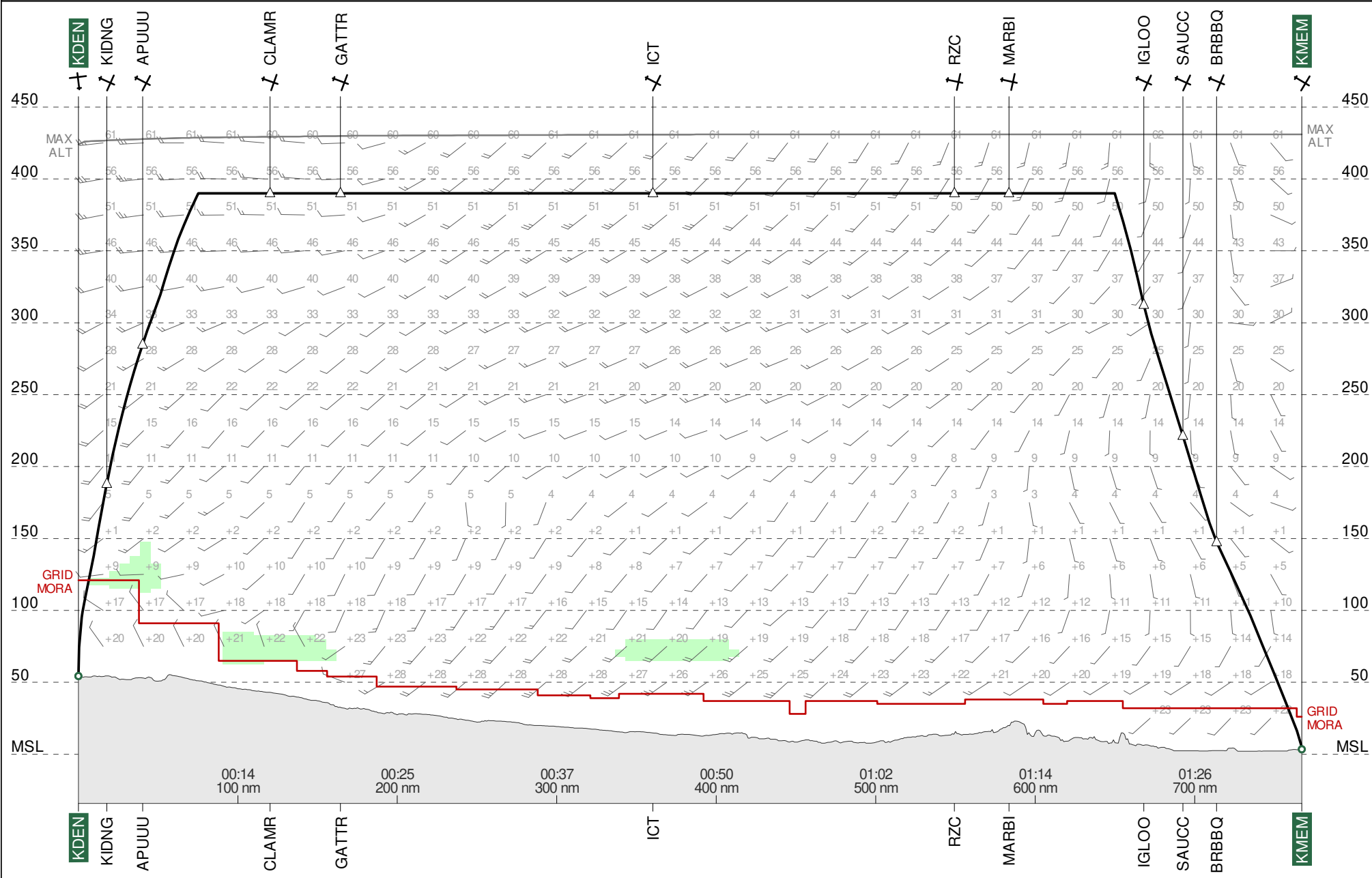
UTC -05:00

KICT 200953Z 17013KT 10SM CLR 26/20 A2983 RMK A02 SLP079 T02610200 \$
KICT 200520Z 2006/2106 17014KT P6SM SKC
FM200700 17013KT P6SM SCT250 WS020/20045KT
FM201300 18014KT P6SM SCT250
FM201400 18015G25KT P6SM SCT250
FM210300 17010KT P6SM SCT250

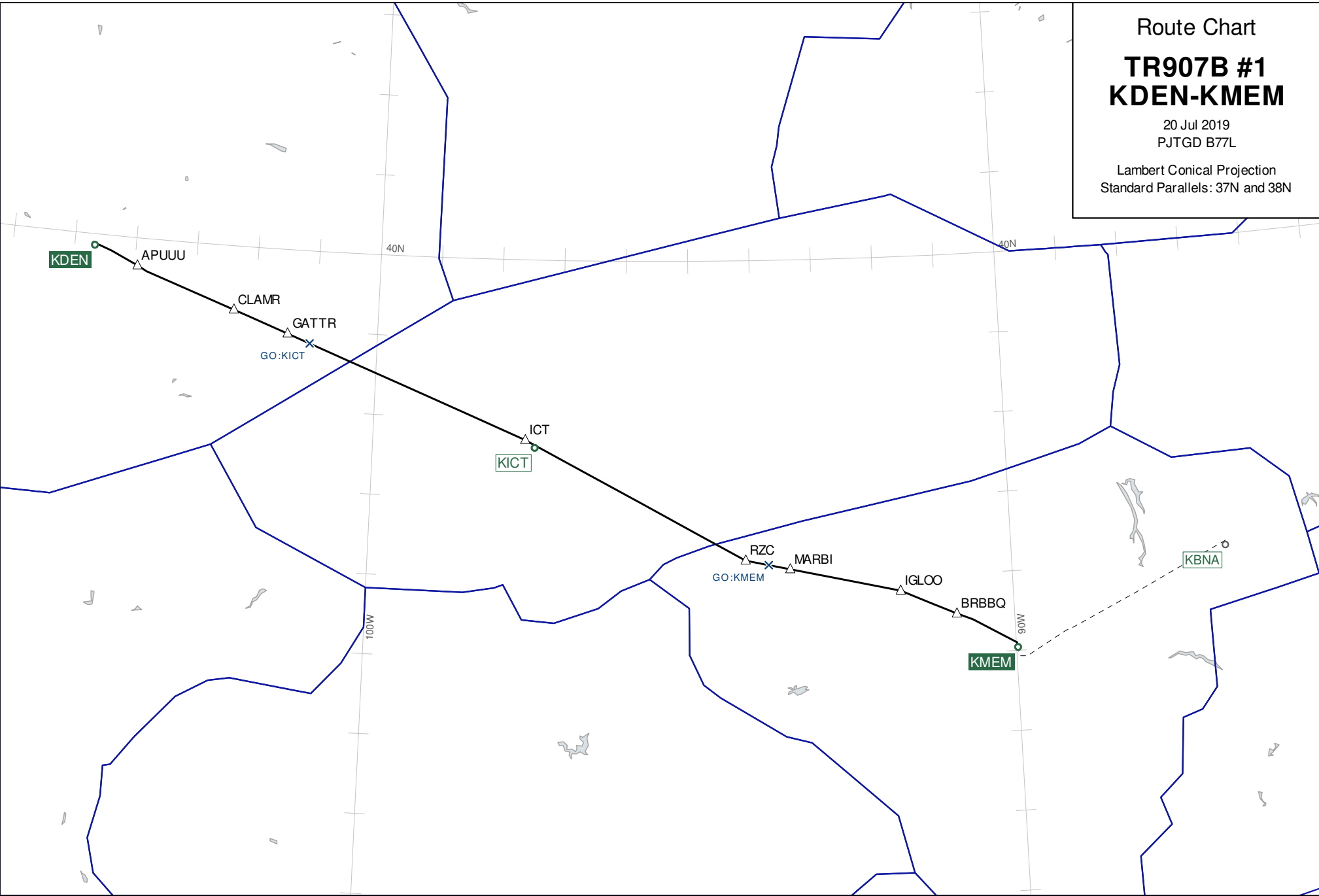
TR907B #1

KDEN → KMEM

ETD 20 Jul 13:00z
PJTGD B77L



Route Chart
TR907B #1
KDEN-KMEM
20 Jul 2019
PJTGD B7L
Lambert Conical Projection
Standard Parallels: 37N and 38N



Wind Chart

FL390

TR907B #1 KDEN-KMEM

Observed 20 Jul 2019 06:00 UTC

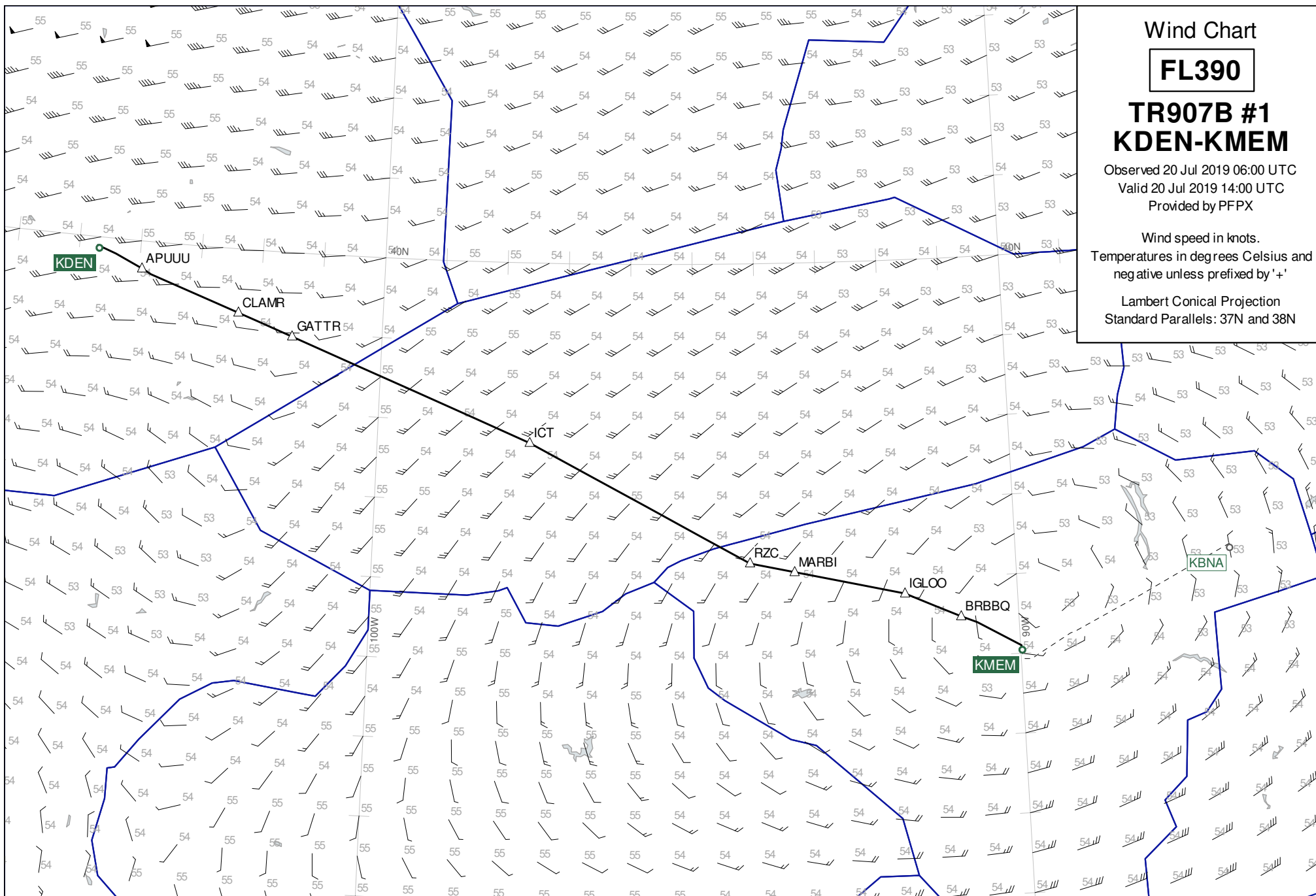
Valid 20 Jul 2019 14:00 UTC

Provided by PFPX

Wind speed in knots.

Temperatures in degrees Celsius and
negative unless prefixed by '+'

Lambert Conical Projection
Standard Parallels: 37N and 38N



Wind Chart

FL350

TR907B #1 KDEN-KMEM

Observed 20 Jul 2019 06:00 UTC

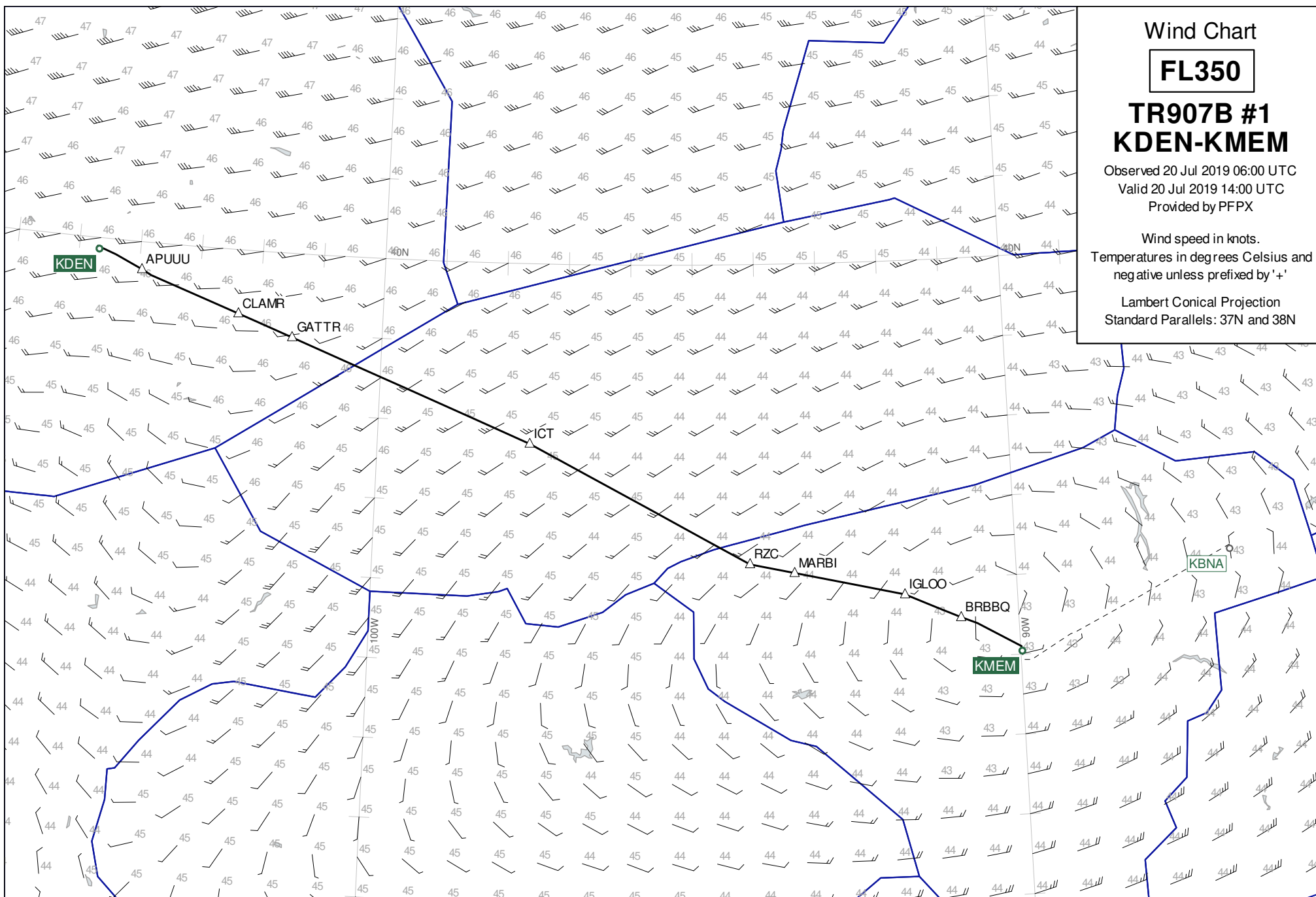
Valid 20 Jul 2019 14:00 UTC

Provided by PFPX

Wind speed in knots.

Temperatures in degrees Celsius and
negative unless prefixed by '+'

Lambert Conical Projection
Standard Parallels: 37N and 38N



Wind Chart

FL430

TR907B #1
KDEN-KMEM

Observed 20 Jul 2019 06:00 UTC
Valid 20 Jul 2019 14:00 UTC
Provided by PFPX

Wind speed in knots.
Temperatures in degrees Celsius and
negative unless prefixed by '+'

Lambert Conical Projection
Standard Parallels: 37N and 38N

